

topciment.com

# PUREMETTAL

## PURE METTAL

Metallic microcement

**Pure Mettal** is a highly decorative two-component metallic microcement. Pure Mettal is suitable for use indoors and outdoors and can be applied to any surface. Pure Mettal is available in a wide range of colours and thanks to its exceptional properties allows the lines and contours of the design to be emphasised in a very significant way, thus achieving a greater intensity and texture, more typical of natural metal.

- Pure Mettal Bronze
- Pure Mettal Aluminium
- Pure Mettal Iridium
- Pure Mettal Brass
- Pure Mettal Cooper

### Technical Data

First layer consumption: 305 g/m<sup>2</sup>  
Second layer consumption: 260 g/m<sup>2</sup>

### Application



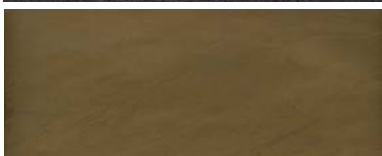
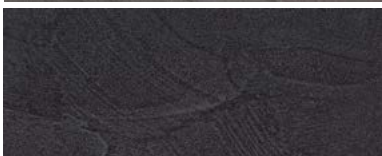
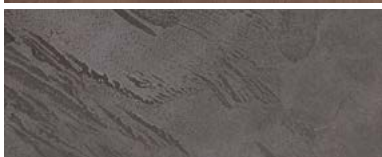
**Pure Mettal** Component A is a powder with metallic properties, while Pure Mettal Component B is the organic hybrid resin.

To carry out its application, Pure Mettal Component A must be mixed with the organic hybrid resin Component B.

The mixing ratio of the components will depend on the mode of application. The indicative rates for trowelling are:

Pure Mettal	COMPONENT A (Kg)	COMPONENT B (Kg)
Bronze	3	1
Aluminium	2	1
Iridium	3	1
Brass	3	1
Copper	2	1

Table 1.- Indicative rates for applying Pure Mettal with trowel.



## Step by step: How to use it?

---

### 1. Cleaning and preparation of the substrate

Make sure the substrate is well cohesioned, dry and if necessary sanded. Vacuum to clean the substrate.

### 2. Primer

Apply one coat of Primacem ABS primer (absorbent substrate) or Primacem PLUS primer (non-absorbent substrate).

### 3. Decoration

Apply Pure Mettal (Bronze, Aluminium, Iridium, Brass, Copper) on the prepared substrate. It is recommended to apply 2 coats to obtain the best finishes. Mix the Pure Mettal Component A with the organic hybrid resin Component B. The indicative ratio (Table 1) can be modified to reach the desired texture.

Apply one coat and allow to dry for 2 hours, then apply the next coat and allow to dry for 12 hours. Drying time may be affected by ambient temperature and humidity. To achieve the metallic shine effect, sand (180-220 grit) and polish (800 and 1000 grit). Clean surface to remove dust.

### 4A. Metallic finish and sealer

If a metallic finish is desired, immediately apply two coats of Topsealer WT One Coat sealer to protect the surface. The ratio of Topsealer WT A catalysed with Topsealer WT B 5:1 (A:B) by weight. Apply the first coat and allow to dry for 24 hours. Apply the second coat of Topsealer WT A+B and allow to dry for 24 hours to see the final finish.

### 4B. Rust finish and sealer

If an oxidised finish is preferred, apply Mettal Activator after decorating and polishing the surface to accelerate the oxidation process. Spray regularly or irregularly depending on the type of attack and desired finish. Leave the product to act for 8 hours. Afterwards, sand with 2000 grit sandpaper those parts where the metallic shine is desired.

Then apply two coats of Presealer. Apply the first coat and let it dry for 4 hours. Apply the second coat, let it dry for 12 hours and sand with 400 grit. The last step is to protect the surface with two coats of Topsealer WT A +B, LETTING IT DRY 24 HOURS BETWEEN COATS.

## Storage

---

The product should be stored in its original closed container and protected from the weather at temperatures between 10°C and 30°C, in a dry and well ventilated place, away from heat sources and direct sunlight. The time of use is 1 year from the date of manufacture, properly stored.

After mixing component A with component B of Pure Mettal, it can be stored in a closed container at temperatures between 10°C and 30°C in a dry place for one week.

## Health and Safety

---

In case of contact with eyes, rinse with plenty of water for 15 minutes.

In case of skin contact wash with soap and water. Do not ingest. In case of ingestion do not provoke vomiting and seek medical attention immediately.

The following measures are recommended:

- Good ventilation
- Protective glasses to avoid splashes
- Rubber gloves

Empty containers must be disposed of in accordance with current legislation. To prevent the product from drying out or thickening, close the lid after each use. Keep out of the reach of children.

Tools used should be washed with soap and water immediately after use.



topciment.com

The product must not be used for purposes other than those specified, without first having written instructions for its use. It is always the responsibility of the user to take appropriate measures in order to comply with the requirements set out in the legislation. The Safety Data Sheets of the product are available for the professionals.

**Last edition: January 2020**